



Community Data Program

Enabling communities across Canada to measure and track local well-being



Overview of the program

1. What is the Community Data Program?
2. What datasets are available through the program?
3. What are some tools and program resources?
4. What have members done with the data?

Program

Note: Items 5-7 are covered in orientation sessions but not this PowerPoint

5. What is communitydata.ca?
6. How do I find data?
7. How do I use the data?

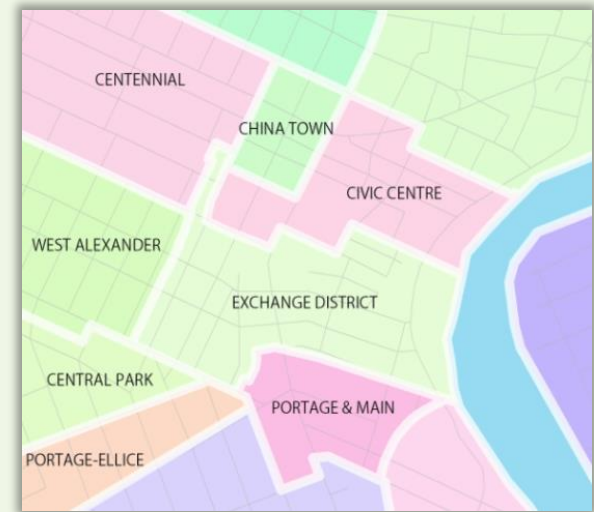
Website



WHAT IS THE COMMUNITY DATA PROGRAM?

Origins of the program

- Established in the 1990s
- Data cost sharing strategy
- From Statistics Canada primarily
- Analyze and report on socioeconomic trends
- Focus on small area geography



The CDP Today

- Organizations across Canada came together originally to purchase urban poverty data
- Today, CDP provides access to a wealth of unique data products and serves the needs of hundreds of organizations
- Local community data **consortia** participate in the national network, providing leadership and oversight
- The **consortium** model has evolved into a tool for community development

What is a consortium?

- Legal group of organizations focused on the implementation of a public service goal
- Established at the community level
- Multi-stakeholder, multi-sector
- Comes together to acquire data
- Functions as a Community Development entity

Examples of Member Organizations

Municipal governments
Local United Way chapters
Community health centres
Social planning councils
School boards
Immigration and youth services
Libraries
Economic development agencies

The Community Data Program helps municipalities and community sector organizations

...

Monitor and report on trends

Acquire customized data

Reduce costs

Build capacity

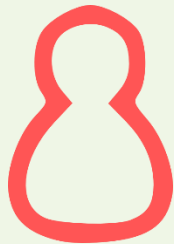
Advocate for community data

The Community Data Network

Community Data Consortia: 30+

Consortium Member Organisations: 350+

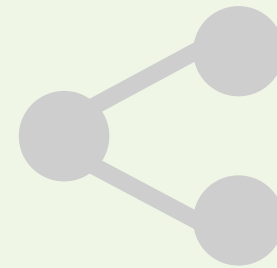
Registered Individuals: 1,500+



The Community Data Network



What do members get?



Data

Direct access to web-based customized community data

Capacity building

Data analysis tools and training

Networking

National network with teleconferences and annual face-to-face events



WHAT DATASETS ARE AVAILABLE THROUGH THE PROGRAM?

Broadly speaking...

- Smallest possible geographic scale
 - Always sub-provincial
 - Lower- and upper-tier municipalities
 - Neighbourhood-level where possible (DA, CT)
- Custom Statistics Canada data
 - Custom cross-tabulations
 - Custom boundaries
- Analysis, reporting, visualization tools
- Links to open data

Census and Taxfiler (T1FF) data

Census and NHS

Standard Census geographies and custom geographies

- Community profiles
- Target group profiles
- Cross-tabulations (standard and custom)
- Community Poverty Project (custom for CDP)

Taxfiler (T1FF)

Standard postal geographies and some Census geographies

- Family data
- Individual data
- Seniors
- Financial data and charitable donations
- Migration
- Income inequality and working poverty (custom for CDP)

Other small area data

Canadian Business Counts

Census Tract and Census Subdivision

Credit Report Characteristics

Six-digit Postal Code

Shelter Capacity Report (ESDC)

Municipalities

Postal Code Conversion File

Building Permits

Census Subdivision

Where to find datasets

Website Catalogue

Find Data
Search our Canadian datasets by applying the filters below

Topics Choose some options	Product Group Choose some options	Data Provider Choose some options	Product Title <input type="text"/> <small>Add part, or all of the title</small>
Geographies Choose some options	Years within data <input type="text"/> <small>i.e. 2006 1976</small>	Items per page 20	

communitydata.ca/data

Community Data Catalogue

- Small area data for all of Canada
- Over 20 public & private data providers
- Municipal and neighbourhood level data
- Statistics Canada custom orders
- Custom geographies
- Analysis, reporting, and visualization tools
- Portal to “the Free Stuff”

Find Data

Search our Canadian datasets by applying the filters below

Topics

Choose some options

Product Group

Choose some options

Data Provider

Choose some options

Product Title

Add part, or all of the title

Geographies

Choose some options

Years within data

i.e. 2006 1976

Items per page

20

Apply Filters

Reset Filters

Displaying 1 - 20 of 936 Products, sorted by post date

Title	Geographies	Years within data	Posted
Income in 2015 (16), Highest certificate, diploma or degree (11), Age groups (11), Sex (3) and Immigrant status and period of immigration (6), for the Population 15 Years and Over in Private Households, 2016 Census PRODUCT GROUP: Census, 2016 - Data tables TOPIC: Cultural identity , TOPIC: Immigration , TOPIC: Demographics , TOPIC: Age, Sex and Population , TOPIC: Education , TOPIC: Highest Certificate, Degree or Diploma , TOPIC: Income , TOPIC: Individual Income	Province and Territory, Census Subdivision, Census Metropolitan Area, Census Division, Census Agglomeration, Aggregate Dissemination Area	2016	06/04/2018
Building Permits, 2017 PRODUCT GROUP: Building Permits TOPIC: Building Permits	Province and Territory, Census Subdivision, Census Metropolitan Area, Census Division, Census Agglomeration	2017	05/17/2018

Data by Theme

- Community data products organized by theme
- Within each theme are variables relating to that topic
- Glossary available in associated [Data Index with map](#)

Find Data
Search our Canadian datasets by applying the filters below

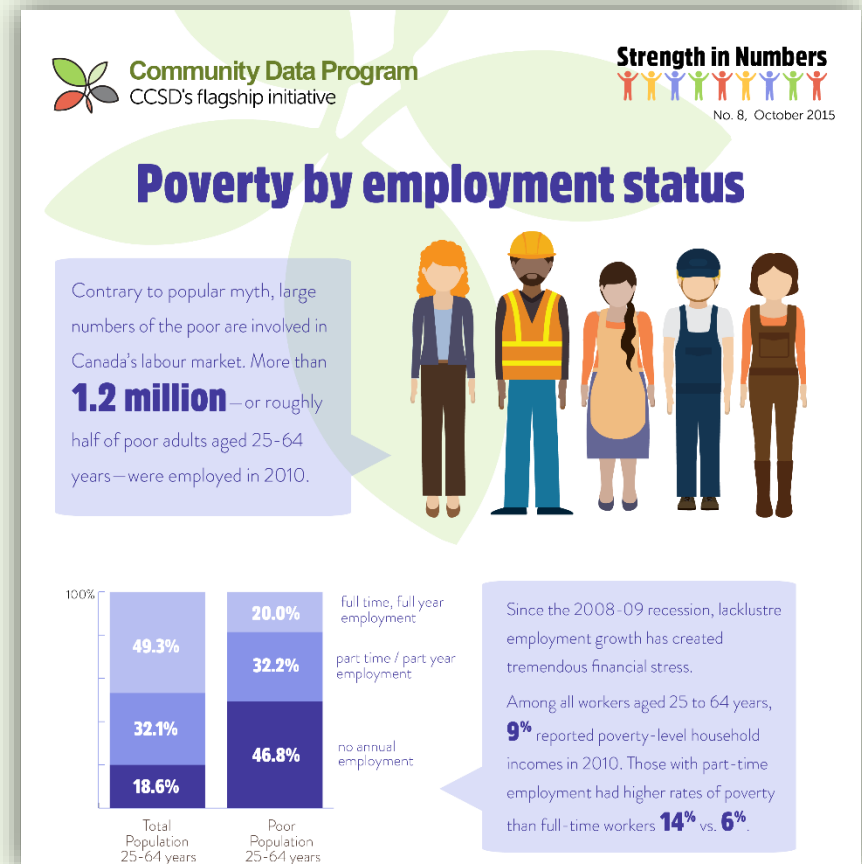
Topics	Product Group	Data Provider	Product Title
<input type="text"/>	<input type="text" value="Choose some options"/>	<input type="text" value="Choose some options"/>	<input type="text"/>
<ul style="list-style-type: none">CrimeData toolsHealthCultural identity-Aboriginal Peoples-Citizenship-Ethnic Origin-Immigration-Language-Religion	<input type="text" value="Years within data"/>	<input type="text" value="Items per page"/>	<small>Add part, or all of the title</small>
	<input type="text" value="2006 1976"/>	<input type="text" value="20"/>	



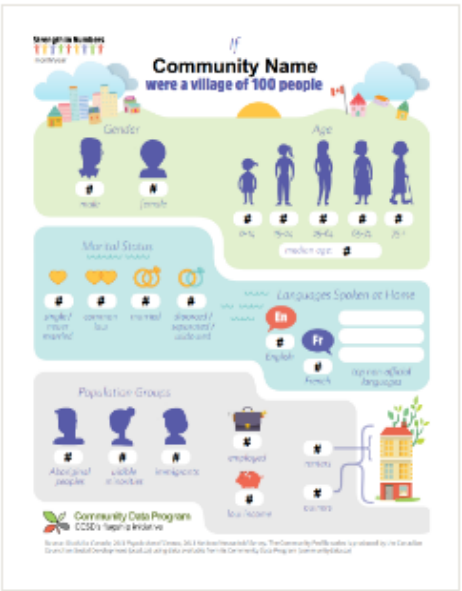
WHAT ARE SOME TOOLS AND PROGRAM RESOURCES AVAILABLE?

Community Reporting

- Strength-in-Numbers Series
- Urban Poverty Project
- Community Snapshots
- Links to member publications



DIY Infographics



List of fillable infographics:

- Village of 100 (2016)
- Regional Profile (2016)
- Education (2016)
- Income (2016)
- Employment (2016)
- Housing (2016)


Online infographic tools:

- Piktochart (free limited selection of templates)
- Infogr.am (free basic version)
- Visme (free basic version)
- Easel.ly (free simple layouts and charts)

- Templates and tools to visually report on a number of important social development themes
- Easy to use and free for members

Data Map Access Tool

- Tool to highlight important social development themes
- User-friendly solution to easily find, select, and download data



The screenshot shows a web-based map interface. At the top, there is a search bar labeled "Find a municipality". Below the search bar is a map of Canada with various municipalities highlighted in yellow. The map includes labels for several cities and regions, such as Thompson, Gillam, Fort Severn, Kuujuaarapik, Modsonne, Québec, Brantford, Winnipeg, Dryden, International Falls, Thunder Bay, Timmins, Fargo, Duluth, Sault Sainte Marie, Ottawa, Toronto, Rochester, Minneapolis, Wisconsin, Michigan, Minnesota, and New Brunswick. On the right side of the map, there is a vertical navigation bar with a plus sign at the top and a minus sign at the bottom. Below the map, there is a footer that reads "© Mapbox © OpenStreetMap Improve this map".

Community Data Downloads

Clicking on the map will generate a series of downloadable Excel files offering customized data sets that represent the CDP's most popular themes and topics. These Excel files contain several geographies corresponding to the selected census division (CD), including all census subdivisions located within the CD, and all custom neighbourhood geographies, where these have been created for selected CDP consortia.

Other Community Data Program Resources

- Strength in Numbers Fact Sheets
- DIY Infographics
- Orientation Video
- Search Data by Theme
- Community Snapshots
- Webinars

Webinars

- Four themes



Program Orientation

Learn how to use the CDP catalogue and Beyond 20/20 software



CDP Product Profiles

Get insight into CDP data products, including product methodology, examples of use, and limitations of use



Transforming Data into Intelligence

Make use of analytical tools, data visualization, and infographics



Data Charrettes

Expand your knowledge with live workshops led by a local consortium demonstrating the use of the CDP to access data on a particular topic

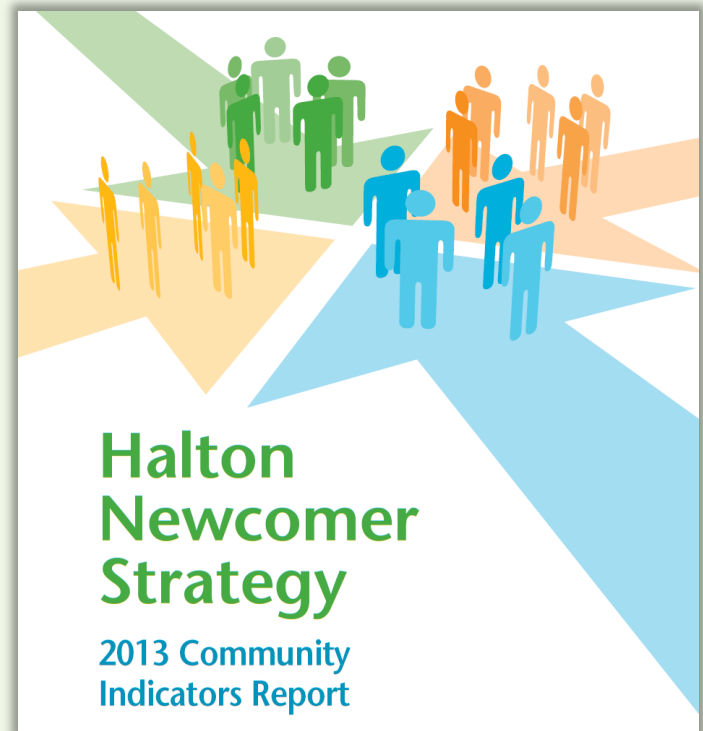
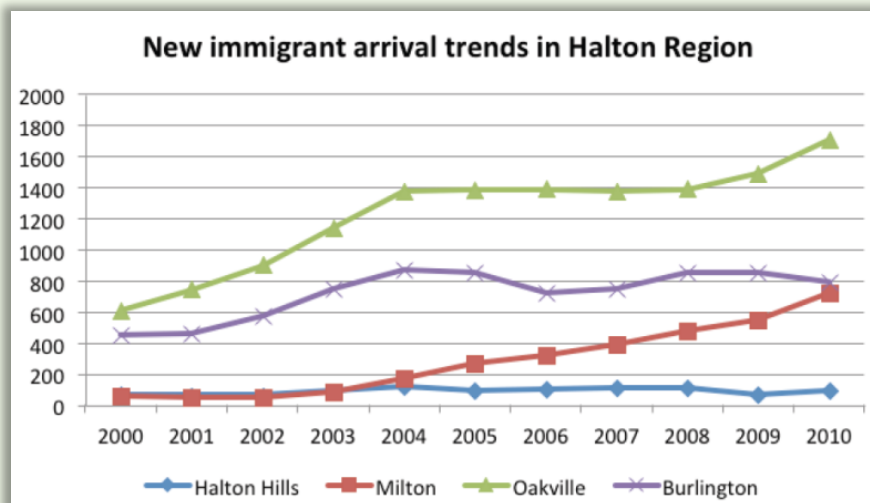
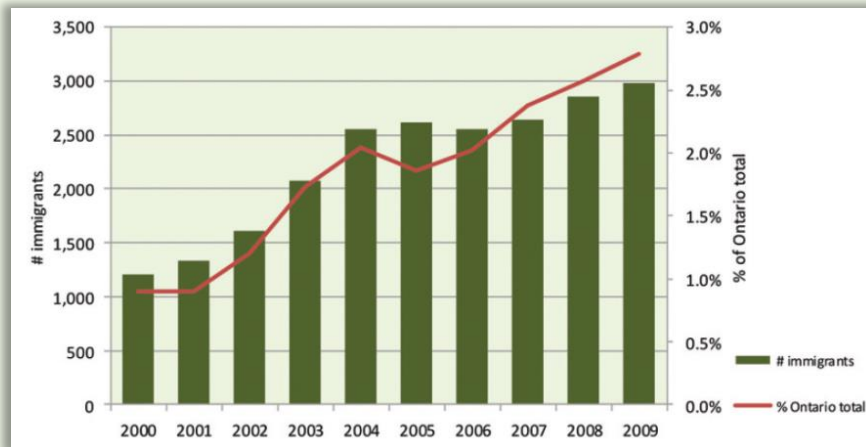
- Generally range from 60 – 90 mins
- Host up to 100 participants
- Real-time data discussions



WHAT HAVE OTHER MEMBERS DONE WITH THE DATA?

Halton Newcomer Strategy: Community Indicators Report

<https://haltonnewcomers.files.wordpress.com/2014/09/halton-newcomer-report-2013.pdf>



The Region of Peel Ward Profiles

<http://www.peelregion.ca/planning-maps/wardprofiles/>

Peel Data Centre | Ward Profiles | Open Data | About PDC | Data | Maps | Resources | Contact Us

Downloads | Census Bulletins | Print | Feedback | Glossary | Help

2011 Region of Peel Ward Profiles

2011 Census and National Household Survey

Ward Profiles | Peel Overview

Ward Profiles

Map showing the Region of Peel with ward boundaries highlighted in green, blue, and orange. Labels include Orangeville, Erin, Fergus, Guelph, Mississauga, Brampton, Vaughan, Markham, and Toronto.

Leaflet | Map data © OpenStreetMap contributors, ODbL, Design © MapBox, Address search © Microsoft Corp., Bing.

Navigating the Ward Profiles

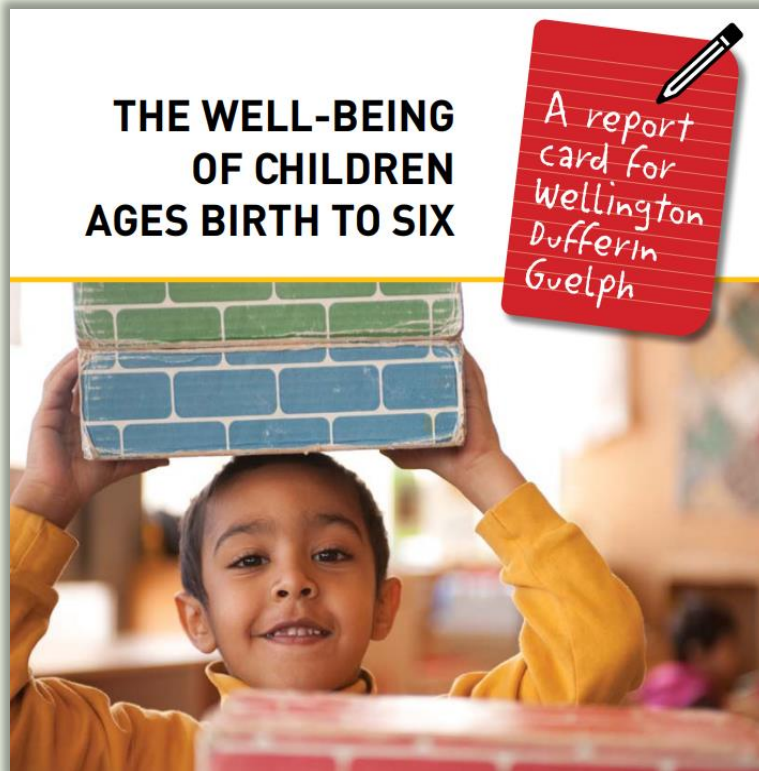
Select Geographies of Interest
Locate the Ward(s) you are interested in with the map to the left. Use the +/- feature to zoom in and out of the map. Select the Ward(s) using the dropdown menu below the map. You can select as many geographies as you wish.

Navigating the Site
Once you select the geographies of interest, the data will be automatically refreshed below. Data is organized into categories (Demographics; Education, Employment & Income; Housing; Ethnicity & Immigration; Language; Transportation) that can be browsed using the tabs above the data. Click on a data category and scroll down to see the data. If you wish to change the geographies at any time, simply scroll up to the dropdown menu and select/delete geographies. For access to the raw data please visit our [Open Data site](#).



WDG: Report Cards on the Well-Being of Children

<http://www.wdgreportcard.com/en/index.aspx>



Wellington - Dufferin - Guelph
Report Cards on the Well-Being of Children

Feedback Search

About Data Portal Our Reports Get Help

Home / Data Portal

Data Portal Home
Education
Health
Living Environment
Safety
Social Relationships

Contact
Looking for more information? Contact the Report Card Coalition today!
Email Us

Welcome to Our Data Portal

The Data Portal is an online reporting tool that allows you to explore and download data related to local children and youth. If you can't find the data you're looking for, or require more data, **submit a data request**. All data is categorized into five domains of well-being:

Education

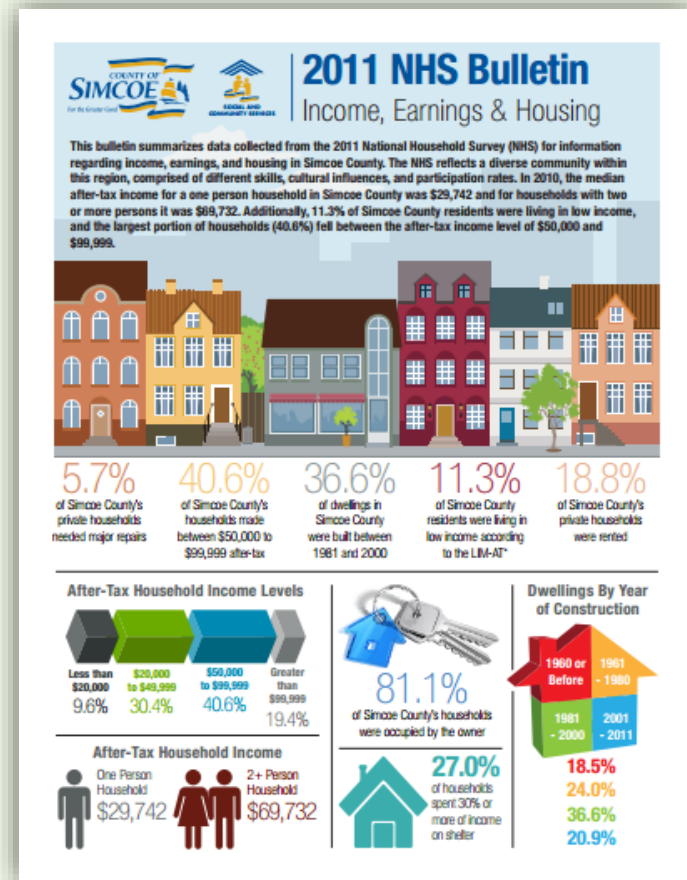
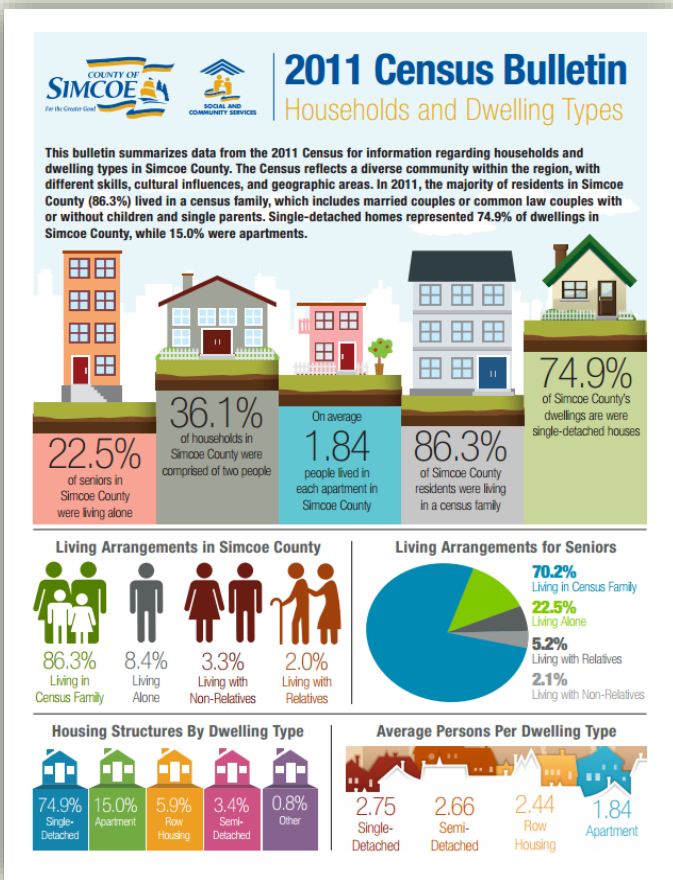
Learn about how children are doing in the early years, including local child care availability and vulnerability in early childhood. Explore data on school experiences including student achievement, participation in school, high school completion, and the transition to post-secondary.

Health

Find data on child and youth disease, infant and maternal health, nutrition and weight, oral health, recreation participation, mental health, sedentary behaviour, sexual health, sleep, and substance use.

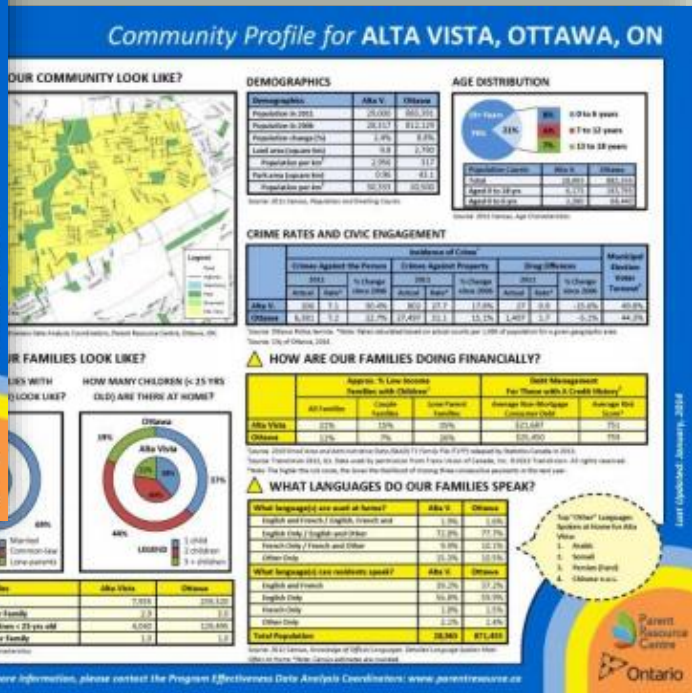
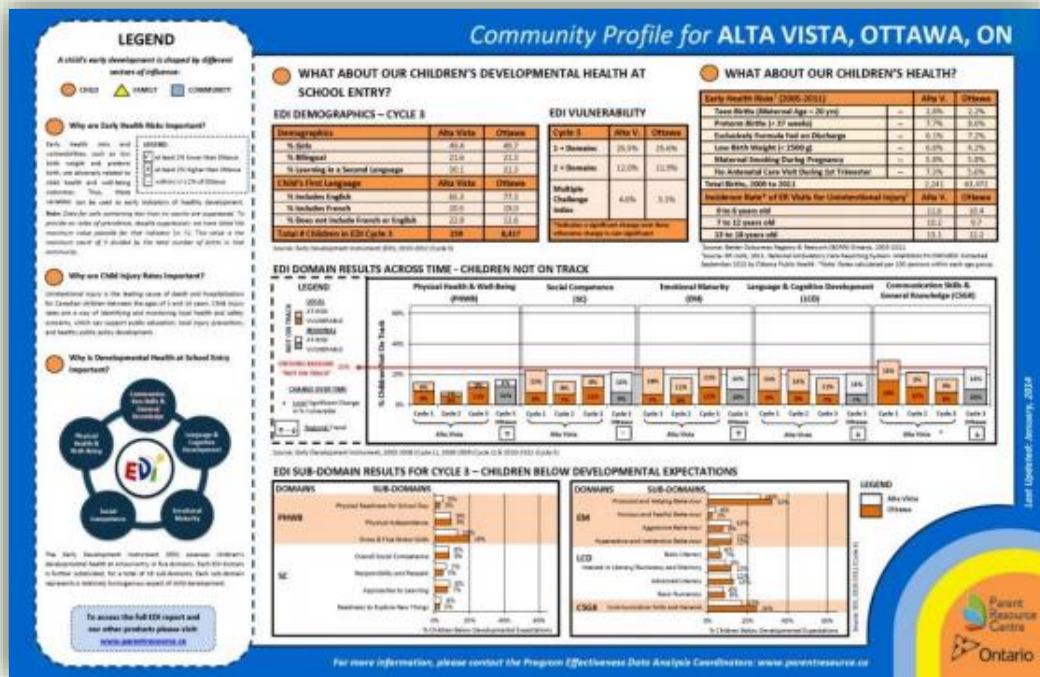
Simcoe County Census and NHS bulletins

<https://www.simcoe.ca/scdc>

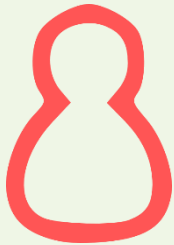


The Parent Resource Centre's Eastern Region Community Profiles

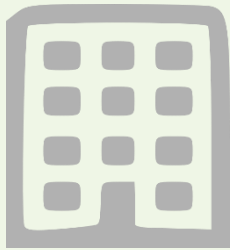
http://www.parentresource.ca/en/ottawaprc/Community_Profiles_p2816.html



Join the Community Data Program



Users of an existing Member Organization can register for a free account on the website.



Non-member Organizations can be a part of the Community Data network by joining an existing Data Consortium.



Or start a local Data Consortium as a lead, and create a local network.



Community Data Program

Enabling communities across Canada to measure and track local well-being

Visit

www.communitydata.ca

or

Send us an email at

information@communitydata.ca

to know more about membership